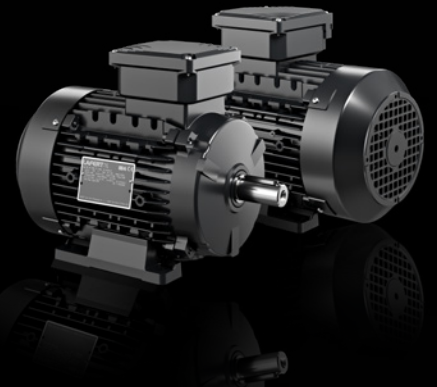
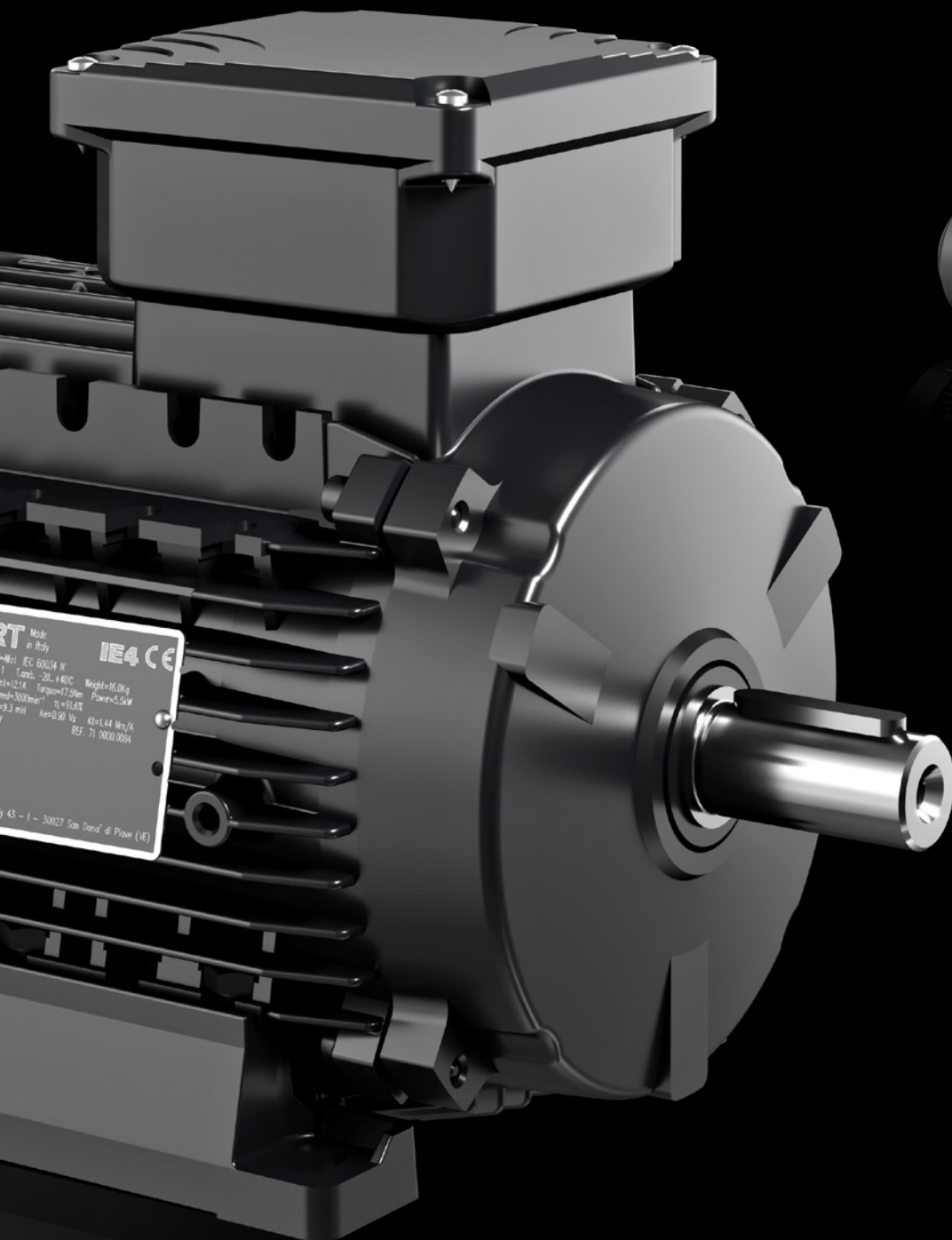


# SUPER PREMIUM EFFICIENCY MOTORS

THREE-PHASE MOTORS  
0.75 TO 200 KW  
400 V - 50 HZ



# SUPER PREMIUM EFFICIENCY THREE-PHASE MOTORS - IE4

EFFICIENCY LEVEL ACCORDING TO IEC 60034-30-1;2014  
EFFICIENCY TESTING METHOD IEC 60034-2-1;2014

NOMINAL FULL LOAD EFFICIENCY ACCORDING TO IE4 CODE @ 400 V - 50 HZ

FOR MAINS VOLTAGE  
400 V - 50 HZ

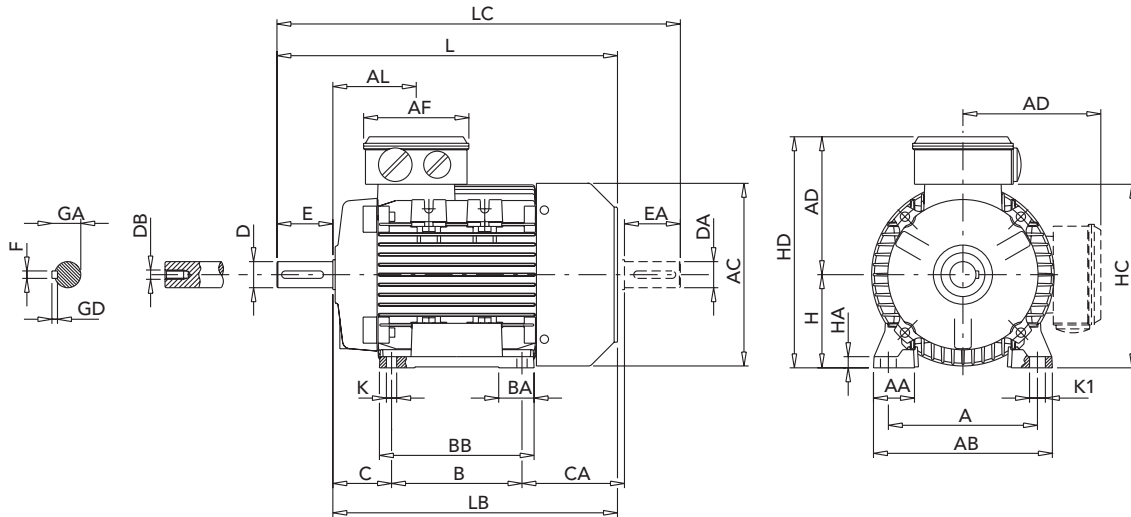
**IE4**

TEMPERATURE RISE TO CLASS B

| Type                      | kW | HP   | rpm  | M <sub>N</sub><br>Nm | η    |      |       | cos φ | I <sub>N</sub><br>460 V | I <sub>A</sub> /I <sub>N</sub> | M <sub>A</sub> /M <sub>N</sub> | M <sub>S</sub> /M <sub>N</sub> | M <sub>K</sub> /M <sub>N</sub> | J                                 |       |       |
|---------------------------|----|------|------|----------------------|------|------|-------|-------|-------------------------|--------------------------------|--------------------------------|--------------------------------|--------------------------------|-----------------------------------|-------|-------|
|                           |    |      |      |                      | 50 % | 75 % | 100 % |       |                         |                                |                                |                                |                                | 10 <sup>-3</sup> kgm <sup>2</sup> | kg    |       |
| <b>ALUMINIUM DESIGN</b>   |    |      |      |                      |      |      |       |       |                         |                                |                                |                                |                                |                                   |       |       |
| <b>3000 rpm (2 poles)</b> |    |      |      |                      |      |      |       |       |                         |                                |                                |                                |                                |                                   |       |       |
| AMQE 80Z AA               | 2  | 0.75 | 1    | 2895                 | 2.5  | 81.6 | 84.3  | 83.5  | 0.79                    | 1.7                            | 8.1                            | 5.1                            | 4.4                            | 5.4                               | 0.7   | 9.5   |
| AMQE 80Z BA               | 2  | 1.1  | 1.5  | 2865                 | 3.7  | 83.8 | 85.8  | 85.2  | 0.76                    | 2.4                            | 8.5                            | 4.9                            | 4.5                            | 4.6                               | 0.9   | 11.1  |
| AMQE 90S AA               | 2  | 1.5  | 2    | 2910                 | 4.9  | 85.6 | 87.2  | 86.5  | 0.81                    | 3.1                            | 9.0                            | 4.8                            | 4.2                            | 5.1                               | 1.6   | 16.4  |
| AMQE 90L BA               | 2  | 2.2  | 3    | 2915                 | 7.3  | 87.7 | 89.0  | 88.0  | 0.79                    | 4.3                            | 9.8                            | 5.0                            | 4.7                            | 5.4                               | 2.0   | 18.0  |
| AMQE 100L AA              | 2  | 3    | 4    | 2935                 | 9.8  | 86.0 | 88.4  | 89.1  | 0.83                    | 5.8                            | 12.3                           | 5.1                            | 4.1                            | 5.6                               | 7.3   | 26.5  |
| AMQE 112M AA              | 2  | 4    | 5.5  | 2950                 | 13.0 | 87.9 | 89.7  | 90.0  | 0.83                    | 7.8                            | 16.0                           | 5.3                            | 4.2                            | 5.7                               | 8.6   | 33.6  |
| AMQE 132S AA              | 2  | 5.5  | 7.5  | 2955                 | 17.8 | 86.4 | 89.5  | 90.9  | 0.87                    | 10.1                           | 14.4                           | 5.3                            | 4.5                            | 6.8                               | 17.5  | 58.0  |
| AMQE 132S BA              | 2  | 7.5  | 10   | 2959                 | 24.3 | 87.8 | 90.3  | 91.7  | 0.82                    | 14.5                           | 12.3                           | 4.1                            | 2.3                            | 5.3                               | 25.0  | 59.0  |
| AMQE 132M CA              | 2  | 9.2  | 12.4 | 2953                 | 29.9 | 90.5 | 91.4  | 91.8  | 0.84                    | 16.6                           | 12.8                           | 4.3                            | 3.7                            | 4.8                               | 28.0  | 68.0  |
| AMQE 160M AA              | 2  | 9.2  | 12.4 | 2970                 | 29.9 | 88.3 | 91.0  | 92.2  | 0.85                    | 16.9                           | 14.0                           | 5.0                            | 4.3                            | 5.2                               | 53.4  | 88.9  |
| AMQE 160M BA              | 2  | 11   | 15   | 2965                 | 35.6 | 89.5 | 91.7  | 92.6  | 0.84                    | 20.3                           | 13.8                           | 5.1                            | 4.5                            | 5.3                               | 53.4  | 88.9  |
| AMQE 160M CA              | 2  | 15   | 20   | 2965                 | 48.7 | 89.8 | 92.0  | 93.3  | 0.84                    | 27.8                           | 12.4                           | 5.1                            | 4.5                            | 5.5                               | 64.0  | 104.0 |
| <b>1500 rpm (4 poles)</b> |    |      |      |                      |      |      |       |       |                         |                                |                                |                                |                                |                                   |       |       |
| AMQE 90S AA4              | 4  | 0.75 | 1    | 1445                 | 5.0  | 83.0 | 85.0  | 85.7  | 0.76                    | 1.7                            | 8.4                            | 4.7                            | 2.8                            | 4.3                               | 3.7   | 16.4  |
| AMQE 90L BA4              | 4  | 1.1  | 1.5  | 1450                 | 7.3  | 84.1 | 86.3  | 86.7  | 0.72                    | 2.5                            | 8.6                            | 4.3                            | 3.3                            | 4.7                               | 3.9   | 20.0  |
| AMQE 100L AA4             | 4  | 1.1  | 1.5  | 1473                 | 7.2  | 85.2 | 87.8  | 87.2  | 0.74                    | 2.5                            | 9.7                            | 4.3                            | 3.3                            | 4.7                               | 8.9   | 21.5  |
| AMQE 100L BA4             | 4  | 1.5  | 2    | 1470                 | 9.8  | 86.4 | 88.4  | 88.2  | 0.77                    | 3.2                            | 10.7                           | 4.1                            | 3.1                            | 4.6                               | 10.7  | 25.3  |
| AMQE 100L CA4             | 4  | 2.2  | 3    | 1472                 | 14.3 | 87.3 | 89.2  | 89.5  | 0.78                    | 4.6                            | 10.1                           | 4.1                            | 3.5                            | 4.5                               | 14.9  | 29.0  |
| AMQE 112M BA4             | 4  | 3    | 4    | 1464                 | 19.7 | 88.8 | 90.1  | 90.4  | 0.79                    | 6.1                            | 9.0                            | 3.6                            | 2.3                            | 4.2                               | 17.4  | 38.9  |
| AMQE 132S AA4             | 4  | 4    | 5.5  | 1477                 | 25.9 | 89.0 | 90.7  | 91.1  | 0.79                    | 8.1                            | 10.2                           | 4.6                            | 3.9                            | 4.4                               | 33.0  | 49.0  |
| AMQE 132S BA4             | 4  | 5.5  | 7.5  | 1476                 | 35.7 | 90.3 | 91.7  | 91.9  | 0.80                    | 10.8                           | 10.2                           | 3.5                            | 2.8                            | 4.3                               | 45.0  | 62.0  |
| AMQE 132M CA4             | 4  | 7.5  | 10   | 1472                 | 49.1 | 90.8 | 92.3  | 92.6  | 0.81                    | 14.5                           | 8.7                            | 2.9                            | 2.1                            | 3.4                               | 57.0  | 71.0  |
| AMQE 160M AA4             | 4  | 9.2  | 12.4 | 1482                 | 59.8 | 92.3 | 93.6  | 93.0  | 0.80                    | 17.9                           | 8.6                            | 2.7                            | 2.0                            | 3.5                               | 105.0 | 105.0 |
| AMQE 160M BA4             | 4  | 11   | 15   | 1482                 | 71.3 | 91.7 | 93.0  | 93.3  | 0.80                    | 21.4                           | 9.1                            | 2.5                            | 2.0                            | 3.2                               | 120.7 | 110.0 |
| AMQE 160L CA4             | 4  | 15   | 20   | 1480                 | 97.4 | 91.8 | 93.3  | 93.9  | 0.80                    | 29.0                           | 8.1                            | 1.9                            | 1.3                            | 3.0                               | 135.0 | 125.0 |
| <b>1000 rpm (6 poles)</b> |    |      |      |                      |      |      |       |       |                         |                                |                                |                                |                                |                                   |       |       |
| AMQE 100L AA              | 6  | 0.75 | 1    | 970                  | 7.5  | 82.5 | 84.6  | 82.7  | 0.66                    | 2.0                            | 5.5                            | 2.3                            | 2.3                            | 2.8                               | 9.7   | 23.0  |
| AMQE 100L BA              | 6  | 1.1  | 1.5  | 966                  | 10.9 | 83.1 | 84.9  | 84.5  | 0.65                    | 2.9                            | 5.2                            | 2.4                            | 2.0                            | 2.8                               | 10.7  | 25.0  |
| AMQE 100L CA              | 6  | 1.5  | 2    | 967                  | 14.9 | 85.3 | 86.6  | 85.9  | 0.70                    | 3.6                            | 5.9                            | 2.6                            | 1.9                            | 2.8                               | 13.3  | 28.0  |
| AMQE 112M AA              | 6  | 2.2  | 3    | 968                  | 21.8 | 86.7 | 87.9  | 87.4  | 0.68                    | 5.3                            | 6.7                            | 2.3                            | 1.8                            | 3.0                               | 23.1  | 36.5  |
| AMQE 132S AA              | 6  | 3    | 4    | 975                  | 29.6 | 87.5 | 89.0  | 88.6  | 0.70                    | 7.0                            | 6.5                            | 3.0                            | 2.0                            | 2.7                               | 44.4  | 46.0  |
| AMQE 132M BA              | 6  | 4    | 5.5  | 976                  | 39.4 | 87.6 | 89.2  | 89.5  | 0.68                    | 9.5                            | 6.2                            | 2.0                            | 1.7                            | 2.5                               | 54.1  | 48.0  |
| AMQE 160M AA              | 6  | 5.5  | 7.5  | 981                  | 53.6 | 88.2 | 90.2  | 90.5  | 0.78                    | 10.3                           | 7.9                            | 1.7                            | 1.0                            | 3.1                               | 130.0 | 105.0 |
| AMQE 160L BA              | 6  | 7.5  | 10   | 981                  | 73.8 | 89.1 | 91.2  | 91.3  | 0.73                    | 16.3                           | 10.4                           | 2.1                            | 3.1                            | 3.5                               | 136.0 | 115.0 |



THREE-PHASE MOTORS | FRAME SIZE 80 - 160 IM B3  
AMQE SERIES - ALUMINIUM ALLOY FRAME



| IEC  | Poles     | kW  | H   | A   | B   | C   | K <sup>1)</sup> | AB  | BB  | CA  | AD <sup>2)</sup> | HD <sup>2)</sup> | AC  | HC  |
|------|-----------|-----|-----|-----|-----|-----|-----------------|-----|-----|-----|------------------|------------------|-----|-----|
| 80   | 2         | all | 80  | 125 | 100 | 50  | 10              | 153 | 125 | 89  | 129              | 209              | 160 | 162 |
| 90S  | 2 - 4     | all | 90  | 140 | 100 | 56  | 10              | 170 | 150 | 116 | 138              | 228              | 180 | 181 |
| 90L  | 2         | 2.2 | 90  | 140 | 125 | 56  | 10              | 170 | 150 | 114 | 138              | 228              | 180 | 181 |
|      | 4         | 1.1 | 90  | 140 | 125 | 56  | 10              | 170 | 150 | 114 | 138              | 228              | 180 | 181 |
| 100L | 2         | 3   | 100 | 160 | 140 | 63  | 11              | 192 | 166 | 110 | 145              | 245              | 196 | 198 |
|      | 4 - 6     | all | 100 | 160 | 140 | 63  | 11              | 192 | 166 | 110 | 145              | 245              | 198 | 192 |
| 112M | 2         | 4   | 112 | 190 | 140 | 70  | 12.5            | 220 | 176 | 126 | 160              | 272              | 225 | 225 |
|      | 4-6       | all | 112 | 190 | 140 | 70  | 12.5            | 220 | 176 | 148 | 160              | 272              | 222 | 225 |
| 132S | 2         | all | 132 | 216 | 140 | 89  | 12              | 256 | 180 | 184 | 196              | 328              | 248 | 261 |
|      | 4         | 4   | 132 | 216 | 140 | 89  | 12              | 256 | 180 | 139 | 195              | 328              | 248 | 261 |
|      | 4         | 5.5 | 132 | 216 | 140 | 89  | 12              | 256 | 180 | 234 | 195              | 328              | 248 | 261 |
| 132M | 6         | 3   | 132 | 216 | 140 | 89  | 12              | 256 | 180 | 159 | 195              | 328              | 248 | 261 |
|      | 2-4       | all | 132 | 216 | 178 | 89  | 12              | 256 | 218 | 216 | 195              | 328              | 248 | 261 |
| 132M | 6         | 4   | 132 | 216 | 178 | 89  | 12              | 256 | 218 | 166 | 195              | 328              | 248 | 261 |
|      | 2 - 4 - 6 | all | 160 | 254 | 210 | 108 | 14              | 320 | 270 | 180 | 238              | 398              | 317 | 316 |
| 160L | 4 - 6     | all | 160 | 254 | 254 | 108 | 14              | 320 | 310 | 180 | 238              | 398              | 317 | 316 |
|      | 4         | 15  | 160 | 254 | 254 | 108 | 14              | 320 | 310 | 206 | 238              | 398              | 317 | 316 |

| IEC  | Poles     | kW  | HA  | K1 | L   | LB  | LC  | AL  | AF  | BA    | AA   | D/DA  | E/EA   | F    | GD  | GA    | DB <sup>3)</sup> |
|------|-----------|-----|-----|----|-----|-----|-----|-----|-----|-------|------|-------|--------|------|-----|-------|------------------|
| 80   | 2         | all | 9.5 | 14 | 272 | 232 | 319 | 79  | 116 | 28.5  | 34.5 | 19    | 40     | 6    | 6   | 21.5  | M6               |
| 90S  | 2 - 4     | all | 11  | 15 | 317 | 267 | 372 | 85  | 116 | 28/53 | 37   | 24    | 50     | 8    | 7   | 27    | M8               |
| 90L  | 2         | 2.2 | 11  | 15 | 340 | 290 | 395 | 85  | 116 | 28/53 | 37   | 24    | 50     | 8    | 7   | 27    | M8               |
|      | 4         | 1.1 | 11  | 15 | 340 | 290 | 395 | 85  | 116 | 28/53 | 37   | 24    | 50     | 8    | 7   | 27    | M8               |
| 100L | 2         | 3   | 12  | 17 | 366 | 306 | 433 | 91  | 116 | 38    | 44   | 28    | 60     | 8    | 7   | 31    | M10              |
|      | 4 - 6     | all | 12  | 17 | 366 | 306 | 433 | 92  | 118 | 41    | 44   | 28    | 60     | 8    | 7   | 31    | M10              |
| 112M | 2         | 4   | 15  | 19 | 388 | 328 | 456 | 92  | 116 | 46    | 48   | 28    | 60     | 8    | 7   | 31    | M10              |
|      | 4-6       | all | 15  | 19 | 410 | 350 | 478 | 92  | 116 | 46    | 48   | 28    | 60     | 8    | 7   | 31    | M10              |
| 132S | 2         | all | 17  | 20 | 485 | 405 | 573 | 100 | 137 | 45    | 59   | 38    | 80     | 10   | 8   | 41    | M12              |
|      | 4         | 4   | 17  | 20 | 445 | 365 | 528 | 100 | 137 | 45    | 59   | 38    | 80     | 10   | 8   | 41    | M12              |
|      | 4         | 5.5 | 17  | 20 | 536 | 456 | 623 | 120 | 137 | 45    | 59   | 38    | 80     | 10   | 8   | 41    | M12              |
| 132M | 6         | 4   | 17  | 20 | 505 | 425 | 593 | 120 | 137 | 45    | 59   | 38    | 80     | 10   | 8   | 41    | M12              |
|      | 2-4       | all | 17  | 20 | 556 | 476 | 643 | 120 | 137 | 45    | 59   | 38    | 80     | 10   | 8   | 41    | M12              |
| 160M | 6         | 4   | 17  | 20 | 505 | 425 | 593 | 120 | 137 | 45    | 59   | 38    | 80     | 10   | 8   | 41    | M12              |
|      | 2 - 4 - 6 | all | 23  | 18 | 608 | 498 | 668 | 146 | 155 | 65    | 76   | 42/28 | 110/60 | 12/8 | 8/7 | 45/31 | M16/M10          |
| 160L | 4 - 6     | all | 23  | 18 | 652 | 542 | 712 | 168 | 155 | 65    | 76   | 42/28 | 110/60 | 12/8 | 8/7 | 45/31 | M16/M10          |
|      | 4         | 15  | 23  | 18 | 678 | 568 | 738 | 168 | 155 | 65    | 76   | 42/28 | 110/60 | 12/8 | 8/7 | 45/31 | M16/M10          |

1) Clearance hole for screw 2) Maximum dimension 3) Centering holes in shaft extensions to DIN 332 part 2

# SUPER PREMIUM EFFICIENCY THREE-PHASE MOTORS - IE4

EFFICIENCY LEVEL ACCORDING TO IEC 60034-30-1;2014  
EFFICIENCY TESTING METHOD IEC 60034-2-1;2014

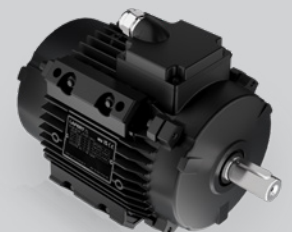
NOMINAL FULL LOAD EFFICIENCY ACCORDING TO IE4 CODE @ 400 V - 50 HZ

FOR MAINS VOLTAGE  
400 V - 50 HZ

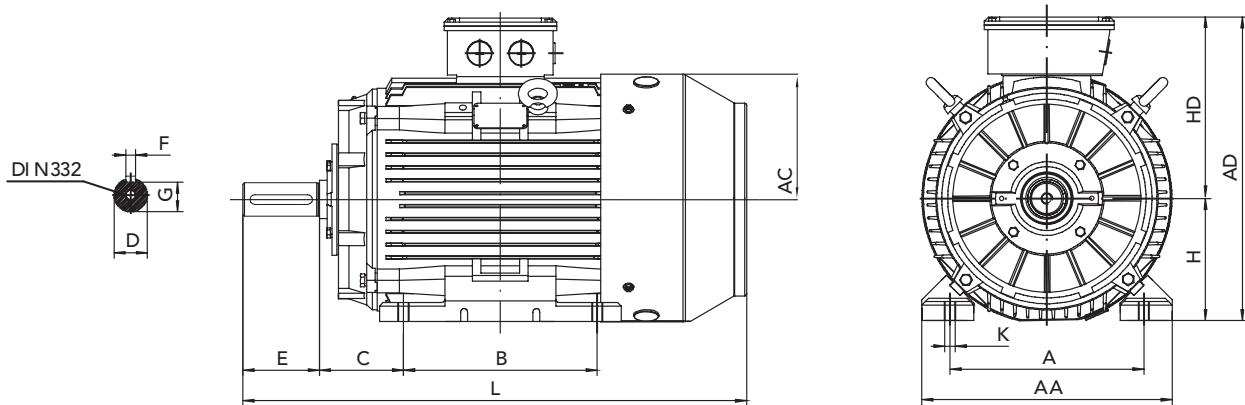
**IE4**

TEMPERATURE RISE TO CLASS B

| Type                      | kW | HP   | rpm | M <sub>N</sub><br>Nm | η      |      |       | cos φ | I <sub>N</sub><br>460 V | I <sub>A</sub> /I <sub>N</sub> | M <sub>A</sub> /M <sub>N</sub> | M <sub>S</sub> /M <sub>N</sub> | M <sub>K</sub> /M <sub>N</sub> | J                                 |      |      |
|---------------------------|----|------|-----|----------------------|--------|------|-------|-------|-------------------------|--------------------------------|--------------------------------|--------------------------------|--------------------------------|-----------------------------------|------|------|
|                           |    |      |     |                      | 50 %   | 75 % | 100 % |       |                         |                                |                                |                                |                                | 10 <sup>-3</sup> kgm <sup>2</sup> | kg   |      |
| <b>CAST IRON DESIGN</b>   |    |      |     |                      |        |      |       |       |                         |                                |                                |                                |                                |                                   |      |      |
| <b>3000 rpm (2 poles)</b> |    |      |     |                      |        |      |       |       |                         |                                |                                |                                |                                |                                   |      |      |
| AMQE 180M ZG              | 2  | 22   | 30  | 2965                 | 70.9   | 92.1 | 94.0  | 94.0  | 0.89                    | 38.0                           | 8.2                            | 2.0                            | 1.8                            | 2.3                               | 75   | 221  |
| AMQE 200L PG              | 2  | 30   | 40  | 2970                 | 96.5   | 92.6 | 94.5  | 94.5  | 0.89                    | 51.5                           | 7.6                            | 2.0                            | 1.8                            | 2.3                               | 124  | 260  |
| AMQE 200L RG              | 2  | 37   | 50  | 2970                 | 119.0  | 92.9 | 94.8  | 94.8  | 0.89                    | 63.2                           | 7.7                            | 2.0                            | 1.8                            | 2.3                               | 139  | 309  |
| AMQE 225M PG              | 2  | 45   | 60  | 2975                 | 144.5  | 93.1 | 95.0  | 95.0  | 0.90                    | 76.0                           | 7.7                            | 2.0                            | 1.8                            | 2.3                               | 233  | 370  |
| AMQE 250M PG              | 2  | 55   | 75  | 2975                 | 176.6  | 93.4 | 95.3  | 95.3  | 0.90                    | 92.6                           | 7.7                            | 2.0                            | 1.8                            | 2.3                               | 312  | 520  |
| AMQE 280S G               | 2  | 75   | 100 | 2980                 | 240.4  | 93.7 | 95.6  | 95.6  | 0.90                    | 126.0                          | 7.1                            | 1.8                            | 1.7                            | 2.7                               | 579  | 570  |
| AMQE 280M G               | 2  | 90   | 125 | 2982                 | 288.2  | 93.9 | 95.8  | 95.8  | 0.90                    | 151.0                          | 7.1                            | 1.8                            | 1.7                            | 2.3                               | 675  | 630  |
| AMQE 315S G               | 2  | 110  | 150 | 2980                 | 352.5  | 94.1 | 96.0  | 96.0  | 0.90                    | 184.0                          | 7.1                            | 1.8                            | 1.7                            | 2.3                               | 1180 | 985  |
| AMQE 315M G               | 2  | 132  | 180 | 2980                 | 423.0  | 94.3 | 96.2  | 96.2  | 0.90                    | 220.0                          | 7.1                            | 1.8                            | 1.7                            | 2.3                               | 1820 | 1050 |
| AMQE 315L RG              | 2  | 160  | 200 | 2980                 | 512.8  | 94.4 | 96.3  | 96.3  | 0.91                    | 264.0                          | 7.2                            | 1.8                            | 1.7                            | 2.3                               | 2080 | 1160 |
| AMQE 315L G               | 2  | 200  | 270 | 2980                 | 640.9  | 94.6 | 96.5  | 96.5  | 0.91                    | 329.0                          | 7.2                            | 1.8                            | 1.7                            | 2.2                               | 2380 | 1200 |
| <b>1500 rpm (4 poles)</b> |    |      |     |                      |        |      |       |       |                         |                                |                                |                                |                                |                                   |      |      |
| AMQE 180M ZG              | 4  | 18.5 | 25  | 1480                 | 119.4  | 92.3 | 94.2  | 94.2  | 0.86                    | 33.0                           | 7.8                            | 2.0                            | 1.9                            | 2.3                               | 139  | 181  |
| AMQE 180L ZG              | 4  | 22   | 30  | 1480                 | 142.0  | 92.6 | 94.5  | 94.5  | 0.86                    | 39.1                           | 7.8                            | 2.0                            | 1.9                            | 2.3                               | 158  | 209  |
| AMQE 200L RG              | 4  | 30   | 40  | 1480                 | 193.6  | 93.0 | 94.9  | 94.9  | 0.86                    | 53.1                           | 7.3                            | 2.0                            | 1.9                            | 2.3                               | 262  | 280  |
| AMQE 225S PG              | 4  | 37   | 50  | 1485                 | 237.9  | 93.3 | 95.2  | 95.2  | 0.86                    | 65.2                           | 7.4                            | 2.0                            | 1.9                            | 2.3                               | 406  | 373  |
| AMQE 225M PG              | 4  | 45   | 60  | 1485                 | 289.4  | 93.5 | 95.4  | 95.4  | 0.86                    | 80.2                           | 7.4                            | 2.0                            | 1.9                            | 2.3                               | 469  | 390  |
| AMQE 250M PG              | 4  | 55   | 75  | 1485                 | 353.7  | 93.8 | 95.7  | 95.7  | 0.86                    | 96.5                           | 7.4                            | 2.2                            | 2.1                            | 2.3                               | 660  | 553  |
| AMQE 280S G               | 4  | 75   | 100 | 1490                 | 480.7  | 94.1 | 96.0  | 96.0  | 0.88                    | 128.0                          | 6.9                            | 2.0                            | 1.9                            | 2.3                               | 1120 | 655  |
| AMQE 280M G               | 4  | 90   | 125 | 1490                 | 576.8  | 94.2 | 96.1  | 96.1  | 0.88                    | 154.0                          | 6.9                            | 2.0                            | 1.9                            | 2.3                               | 1460 | 730  |
| AMQE 315S G               | 4  | 110  | 150 | 1490                 | 705.0  | 94.4 | 96.3  | 96.3  | 0.89                    | 185.0                          | 7.0                            | 2.0                            | 1.9                            | 2.2                               | 3110 | 980  |
| AMQE 315M G               | 4  | 132  | 180 | 1490                 | 846.0  | 94.5 | 96.4  | 96.4  | 0.89                    | 222.0                          | 7.0                            | 2.0                            | 1.9                            | 2.2                               | 3620 | 1031 |
| AMQE 315L RG              | 4  | 160  | 200 | 1490                 | 1026.0 | 94.7 | 96.6  | 96.6  | 0.89                    | 269.0                          | 7.1                            | 2.0                            | 1.9                            | 2.2                               | 4130 | 1093 |
| AMQE 315L G               | 4  | 200  | 270 | 1490                 | 1282.0 | 94.8 | 96.7  | 96.7  | 0.90                    | 332.0                          | 7.1                            | 2.0                            | 1.9                            | 2.2                               | 4730 | 1190 |
| <b>1000 rpm (6 poles)</b> |    |      |     |                      |        |      |       |       |                         |                                |                                |                                |                                |                                   |      |      |
| AMQE 180L ZG              | 6  | 15   | 20  | 985                  | 145.4  | 91.0 | 92.9  | 92.9  | 0.81                    | 28.8                           | 7.3                            | 2.0                            | 2.0                            | 2.1                               | 207  | 245  |
| AMQE 200L PG              | 6  | 18.5 | 25  | 985                  | 179.4  | 91.5 | 93.4  | 93.4  | 0.81                    | 35.3                           | 7.3                            | 2.0                            | 2.0                            | 2.1                               | 315  | 265  |
| AMQE 200L RG              | 6  | 22   | 30  | 985                  | 213.3  | 91.8 | 93.7  | 93.7  | 0.81                    | 41.8                           | 7.4                            | 2.0                            | 2.0                            | 2.1                               | 360  | 285  |
| AMQE 225M PG              | 6  | 30   | 40  | 990                  | 289.4  | 92.3 | 94.2  | 94.0  | 0.83                    | 55.4                           | 6.9                            | 2.0                            | 2.0                            | 2.1                               | 547  | 335  |
| AMQE 250M PG              | 6  | 37   | 50  | 990                  | 356.9  | 92.6 | 94.5  | 94.5  | 0.84                    | 67.3                           | 7.1                            | 2.0                            | 2.0                            | 2.1                               | 843  | 471  |
| AMQE 280S G               | 6  | 45   | 60  | 990                  | 434.1  | 92.9 | 94.8  | 94.8  | 0.85                    | 80.6                           | 7.3                            | 2.0                            | 2.0                            | 2.0                               | 1390 | 530  |
| AMQE 280M G               | 6  | 55   | 75  | 990                  | 530.6  | 93.2 | 95.1  | 95.1  | 0.86                    | 97.1                           | 7.3                            | 2.0                            | 2.0                            | 2.0                               | 1650 | 670  |
| AMQE 315S G               | 6  | 75   | 100 | 990                  | 723.5  | 93.5 | 95.4  | 95.4  | 0.84                    | 135.0                          | 6.6                            | 2.0                            | 2.0                            | 2.0                               | 4110 | 960  |
| AMQE 315M G               | 6  | 90   | 125 | 990                  | 868.2  | 93.7 | 95.6  | 95.6  | 0.85                    | 160.0                          | 6.7                            | 2.0                            | 2.0                            | 2.0                               | 4780 | 1070 |
| AMQE 315L RG              | 6  | 110  | 150 | 990                  | 1061.0 | 93.9 | 95.8  | 95.8  | 0.85                    | 195.0                          | 6.7                            | 2.0                            | 2.0                            | 2.0                               | 5450 | 1160 |
| AMQE 315L G               | 6  | 132  | 180 | 990                  | 1273.0 | 94.1 | 96.0  | 96.0  | 0.86                    | 231.0                          | 6.8                            | 2.0                            | 2.0                            | 2.0                               | 6120 | 1250 |



## THREE-PHASE MOTORS | FRAME SIZE 180 - 315 IM B3 AMQE SERIES - CAST IRON FRAME



| IEC  | Poles | H   | A   | B   | C   | K  | AD  | HD  | AC  | L    | AA  | D  | E   | F  | G    |
|------|-------|-----|-----|-----|-----|----|-----|-----|-----|------|-----|----|-----|----|------|
| 180M | 2-4-6 | 180 | 279 | 241 | 121 | 15 | 451 | 271 | 355 | 661  | 349 | 48 | 110 | 14 | 42.5 |
| 180L | 2-4-6 | 180 | 279 | 279 | 121 | 15 | 451 | 271 | 355 | 699  | 349 | 48 | 110 | 14 | 42.5 |
| 200  | 2-4-6 | 200 | 318 | 305 | 133 | 19 | 500 | 300 | 397 | 757  | 388 | 55 | 110 | 16 | 49   |
| 225S | ≥ 4   | 225 | 356 | 286 | 149 | 19 | 548 | 323 | 445 | 798  | 431 | 60 | 140 | 18 | 53   |
| 225M | 2     | 225 | 356 | 311 | 149 | 19 | 548 | 323 | 445 | 823  | 431 | 55 | 110 | 16 | 49   |
|      | ≥ 4   | 225 | 356 | 311 | 149 | 19 | 548 | 323 | 445 | 823  | 431 | 60 | 140 | 18 | 53   |
| 250  | 2     | 250 | 406 | 349 | 168 | 24 | 609 | 359 | 485 | 900  | 484 | 60 | 140 | 18 | 53   |
|      | ≥ 4   | 250 | 406 | 349 | 168 | 24 | 609 | 359 | 485 | 900  | 484 | 65 | 140 | 18 | 58   |
| 280S | 2     | 280 | 457 | 368 | 190 | 24 | 691 | 411 | 569 | 979  | 542 | 65 | 140 | 18 | 58   |
|      | ≥ 4   | 280 | 457 | 368 | 190 | 24 | 691 | 411 | 569 | 979  | 542 | 75 | 140 | 20 | 67.5 |
| 280M | 2     | 280 | 457 | 419 | 190 | 24 | 691 | 411 | 569 | 1019 | 542 | 65 | 140 | 18 | 58   |
|      | ≥ 4   | 280 | 457 | 419 | 190 | 24 | 691 | 411 | 569 | 1019 | 542 | 75 | 140 | 20 | 67.5 |
| 315S | 2     | 315 | 508 | 406 | 216 | 28 | 837 | 522 | 620 | 1158 | 628 | 65 | 140 | 18 | 58   |
|      | ≥ 4   | 315 | 508 | 406 | 216 | 28 | 837 | 522 | 620 | 1188 | 628 | 80 | 170 | 22 | 71   |
| 315M | 2     | 315 | 508 | 457 | 216 | 28 | 837 | 522 | 620 | 1268 | 628 | 65 | 140 | 18 | 58   |
|      | ≥ 4   | 315 | 508 | 457 | 216 | 28 | 837 | 522 | 620 | 1298 | 628 | 80 | 170 | 22 | 71   |
| 315L | 2     | 315 | 508 | 508 | 216 | 28 | 837 | 522 | 620 | 1334 | 628 | 65 | 140 | 18 | 58   |
|      | ≥ 4   | 315 | 508 | 508 | 216 | 28 | 837 | 522 | 620 | 1334 | 628 | 80 | 170 | 22 | 71   |

1) Clearance hole for screw 2) Maximum dimension 3) Centering holes in shaft extensions to DIN 332 part 2





**Lafert S.p.A.**

Via J.F. Kennedy,43  
30027 San Donà di Piave (Venice), Italy  
Tel. +39 / 0421 229 611  
lafert.info@shi-g.com

[www.lafert.com](http://www.lafert.com)

**Branches & Partners****Lafert GmbH**

Wolf-Hirth-Straße 10  
71034 Böblingen  
Germany  
Phone +49 175 550 4526  
lge.info@shi-g.com

**Lafert Electric Motors Ltd.**

Unit 17 Orion Way  
Crewe, Cheshire CW1 6NG  
United Kingdom  
Phone +44 / (0) 1270 270 022  
luk.info@shi-g.com

**Lafert Moteurs S.A.S.**

L'Isle d'Abeau Parc de Chesnes  
75, rue de Malacombe  
38070 St. Quentin-Fallavier  
France  
Phone +33 / 474 95 41 01  
lfr.info@shi-g.com

**Lafert Motores Eléctricos, S.L.U.**

Polígono Pignatelli, Nave 27  
50410 Cuarte de Huerva (Zaragoza)  
Spain  
Phone +34 / 976 503 822  
les.info@shi-g.com

**Lafert N.A. (North America)**

5620 Kennedy Road - Mississauga  
Ontario L4Z 2A9  
Canada  
Phone +1 / 800/661 6413 - 905/629 1939  
lna.info@shi-g.com

**Lafert Electric Motors (Australia)**

Factory 3, 117-123 Abbott Road,  
Hallam - VIC 3803  
Australia  
Phone +61 / (0)3 95 46 75 15  
info@lafertaust.com.au

**Lafert Singapore Pte Ltd**

48 Hillview Terrace #06-06  
Hillview Building - Singapore 669269  
Phone +65 / 67630400 - 67620400  
info@lafert.com.sg

**Lafert (Suzhou) Co., Ltd.**

No.3 Industrial Plant Building Yue Xi Phase 3,  
Tian E Dang Lu 2011, 215104 Wuzong  
Economic Development Zone, Suzhou  
China  
Phone +86 / 512 6687 0618  
lsu.info@shi-g.com