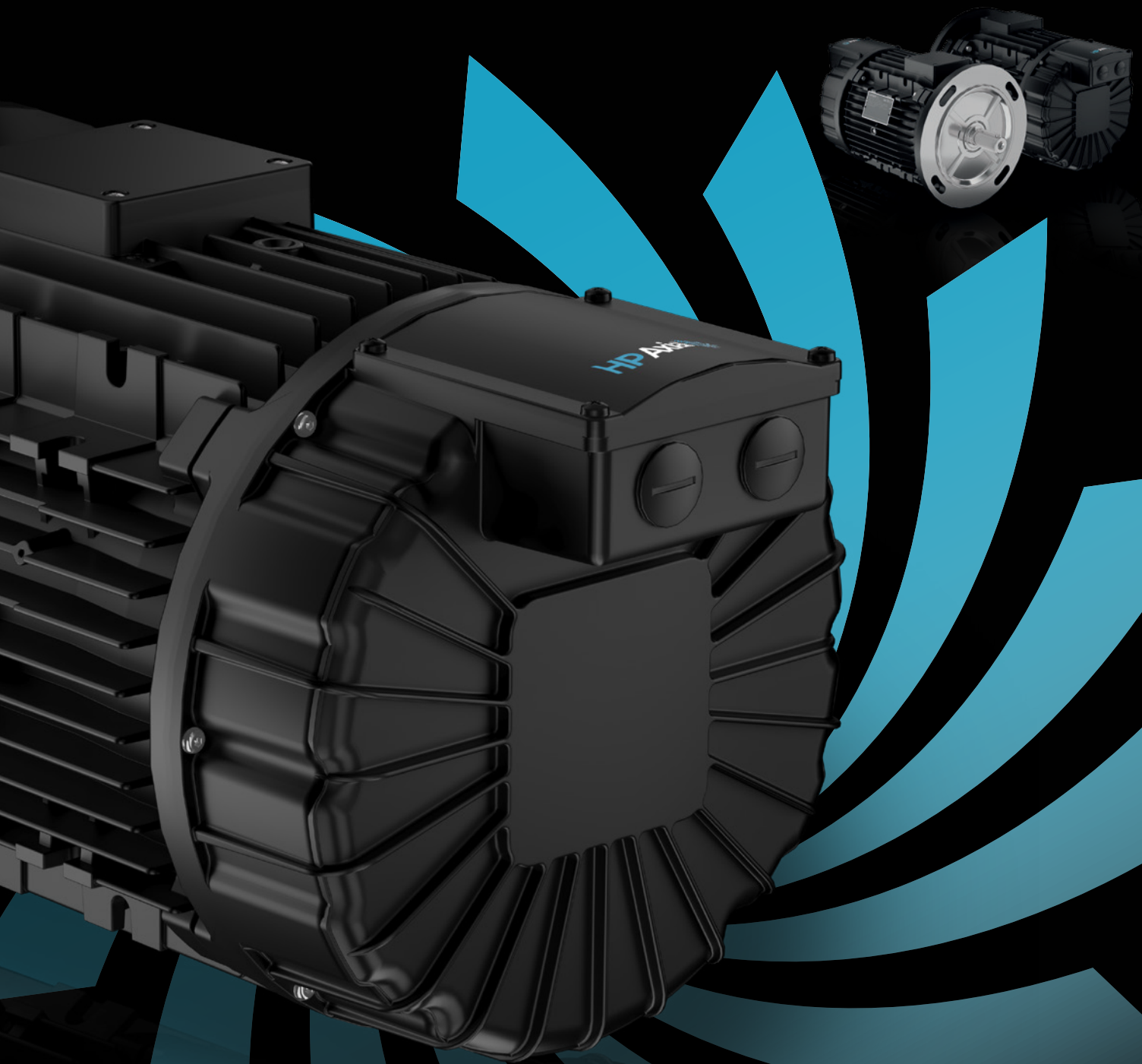


HP Axial

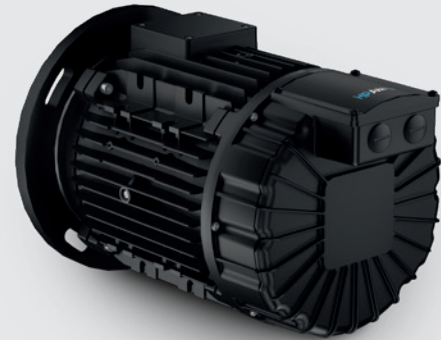


HP Axial is the latest axially integrated motor-drive package combining a PM (permanent magnet) synchronous motor with a VFD (variable frequency drive) mounted on the NDE (non-drive side) motor side.

The motor range leverages both brushless servo motor and AC induction motor technologies, increasing power density and allowing for **significant size and weight reductions of up to 50%**.

The drive is fully integrated with the motor in a dedicated enclosure **mounted on the NDE side**, providing a very compact design and further reducing overall size and weight.

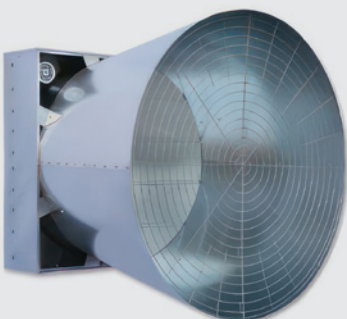
This configuration meets the application needs of **axial fans** where the use of compact motor without protruding elements minimizes the impact on the airflow, thus ensuring a reduction in energy consumption. The **pad mounting design** further reduces the impact on the airflow, making the system more efficient and performant.



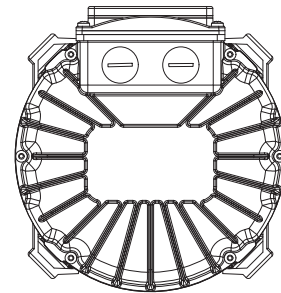
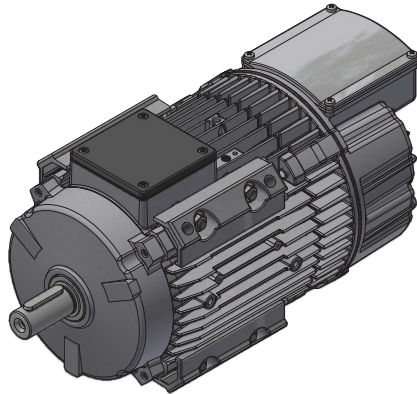
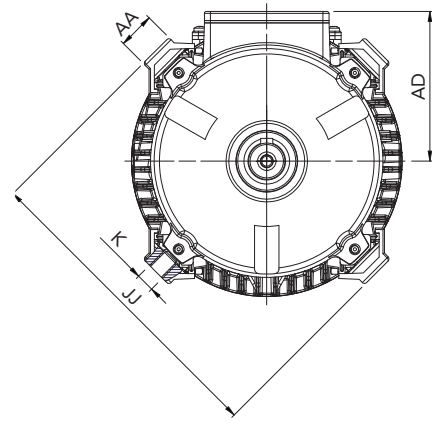
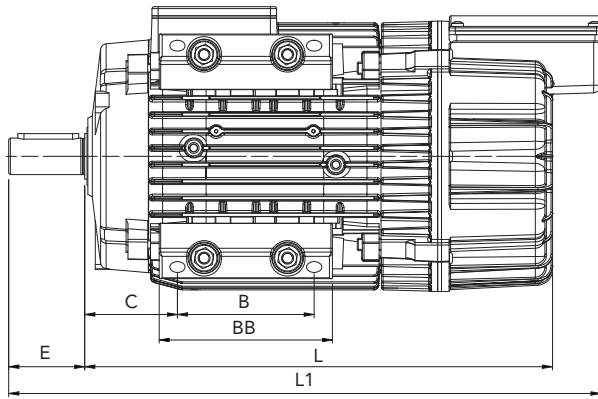
IES2

PERFORMANCE DATA | HPA 90 -112

Type	Size	Speed	Rated Power	Rated Torque	Peak Torque	Voltage Constant	Torque Constant	Rated Current	Motor Efficiency IES	Efficiency HPA
									η [%]	η [%]
		n [rpm]	Pn [kW]	Mn [Nm]	Mpk [Nm]	Ke [Vs]	Kt [Nm/A]	In [Arms]		
HPAX 90 750 16	90	750	0.75	9.5	14.3	3.46	5.99	1.6	79.8	78.3
HPAX 90 750 23	90	750	1.1	14.0	21.0	3.46	5.99	2.3	82.0	80.7
HPAX 90 750 32	90	750	1.5	19.1	28.6	3.46	5.99	3.2	83.7	82.6
HPAX 112 750 47	112	750	2.2	28.0	42.0	3.46	5.99	4.7	85.6	83.3
HPAX 112 750 64	112	750	3	38.2	57.3	3.46	5.99	6.4	86.9	84.9
HPAX 112 750 85	112 XL	750	4	50.9	76.4	3.46	5.99	8.5	88.0	86.4
HPAX 90 1000 16	90	1000	0.75	7.2	10.7	2.6	4.50	1.6	83.9	82.3
HPAX 90 1000 23	90	1000	1.1	10.5	15.8	2.6	4.50	2.3	85.6	84.3
HPAX 90 1000 32	90	1000	1.5	14.3	21.5	2.6	4.50	3.2	86.9	85.8
HPAX 112 1000 47	112	1000	2.2	21.0	31.5	2.6	4.50	4.7	88.3	86.0
HPAX 112 1000 64	112	1000	3	28.6	43.0	2.6	4.50	6.4	89.3	87.3
HPAX 112 1000 85	112 XL	1000	4	38.2	57.3	2.6	4.50	8.5	90.2	88.6
HPAX 90 1500 16	90	1500	0.75	4.8	7.2	1.73	3.00	1.6	86.7	85.1
HPAX 90 1500 23	90	1500	1.1	7.0	10.5	1.73	3.00	2.3	88.1	86.7
HPAX 90 1500 32	90	1500	1.5	9.5	14.3	1.73	3.00	3.2	89.1	88.0
HPAX 112 1500 47	112	1500	2.2	14.0	21.0	1.73	3.00	4.7	90.2	87.8
HPAX 112 1500 64	112	1500	3	19.1	28.6	1.73	3.00	6.4	91.0	89.0
HPAX 112 1500 85	112	1500	4	25.5	38.2	1.73	3.00	8.5	91.8	90.2
HPAX 90 3000 15	90	3000	0.75	2.4	3.6	0.9	1.56	1.5	84.6	83.0
HPAX 90 3000 22	90	3000	1.1	3.5	5.3	0.9	1.56	2.2	86.2	84.8
HPAX 90 3000 31	90	3000	1.5	4.8	7.2	0.9	1.56	3.1	87.4	86.3
HPAX 112 3000 45	112	3000	2.2	7.0	10.5	0.9	1.56	4.5	88.9	86.6
HPAX 112 3000 61	112	3000	3	9.5	14.3	0.9	1.56	6.1	89.9	87.9
HPAX 112 3000 82	112	3000	4	12.7	19.1	0.9	1.56	8.2	90.7	89.1



DIMENSIONS FRAME SIZE 90 - 112 ALUMINIUM ALLOY FRAME



IEC	B	C	E	BB	L 400V	L 220V	L1 400V	L1 220V	AA	AD	JJ	K
90	90	61	50	114	310	330	390	410	24	99	206	M12
112	100	90	60	124	314	314	358	358	24	122	250	M12
112XL	100	90	60	124	331	331	363	363	24	122	250	M12

VARIABLE FREQUENCY DRIVE (VFD) SPECIFICATIONS HPA 90 -112

MAIN SUPPLY

Three-phase Supply Voltage	200-240 V ± 10%
	380-480 V ± 10%

OUTPUT RATINGS

Overload Capacity	150% / 60 seconds (7.0A: 110% / 60 seconds)
-------------------	--

PROGRAMMABLE INPUTS

2 Digital (+2 optional)
2 Analog

BUILT IN FIELDBUS

CANopen
Modbus RTU
(Ethernet/IP - optional)

INTERNAL EMC FILTER

In accordance with EN 61800-3-2004

INTERNAL BRAKE TRANSISTOR

Frame Size 2 only (440V 5.8A & 9.5A)

HPA RANGE

IE5 IES2

- Power rating: 0.75kW to 4kW
1HP to 5.5HP
- Speed: up to 4500 rpm
- Three-phase Supply Voltage: 200-240V
380-480V
- Efficiency: Motor IE5 - System IES2
- Frame size: 90, 112
- TEAO design
- Degree of Protection: IP55 (Drive IP66 on request)
- Design flexibility
- PC tool and mobile app for easy set up



Lafert S.p.A.

J. F. Kennedy, 43
30027 San Donà di Piave (Venezia), Italy
Tel. +39 / 0421 229 611
lafert.info@shi-g.com

www.lafert.com

Branches & Partners

Lafert GmbH

Wolf-Hirth-Straße 10
71034 Böblingen
Germany
Phone +49 175 550 4526
lge.info@shi-g.com

Lafert Electric Motors Ltd.

Unit 17 Orion Way
Crewe, Cheshire CW1 6NG
United Kingdom
Phone +44 / (0) 1270 270 022
luk.info@shi-g.com

Lafert Moteurs S.A.S.

L'Isle d'Abeau Parc de Chesnes
75, rue de Malacombe
38070 St. Quentin-Fallavier
France
Phone +33 / 474 95 41 01
lfr.info@shi-g.com

Lafert Motores Electricos, S.L.U.

Polígono Pignatelli, Nave 27
50410 Cuarte de Huerva (Zaragoza)
Spain
Phone +34 / 976 503 822
les.info@shi-g.com

Lafert N.A. (North America)

5620 Kennedy Road - Mississauga
Ontario L4Z 2A9
Canada
Phone +1 / 800/661 6413 - 905/629 1939
lna.info@shi-g.com

Lafert Electric Motors (Australia)

Factory 3, 117-123 Abbott Road,
Hallam - VIC 3803
Australia
Phone +61 / (0)3 95 46 75 15
info@lafertaustr.com.au

Lafert Singapore Pte Ltd

48 Hillview Terrace #06-06
Hillview Building - Singapore 669269
Phone +65 / 67630400 - 67620400
info@lafert.com.sg

Lafert (Suzhou) Co., Ltd.

No.3 Industrial Plant Building Yue Xi Phase 3,
Tian E Dang Lu 2011, 215104 Wuzong
Economic Development Zone, Suzhou
China
Phone +86 / 512 6687 0618
lsu.info@shi-g.com